



# Bullet-Resistant Window Shades & Door Shields

## Features

- Protects against most common variants of: 9mm, .357, .45, 10mm, .44 Mag
- UL752 Level 2 and 3 certified
- Maintains ADA compliance
- Easy installation, minimal disruption
- Motorized control for shades and curtains
- Can be wired to activate with an existing alarm system
- Large format and tailored sizing
- Customizable colors, patterns, and fabrics

Superior handgun protection over bullet-resistant glass or steel

- ✓ Lower cost
- ✓ Far less weight
- ✓ Fraction of the install time
- ✓ Retain egress access

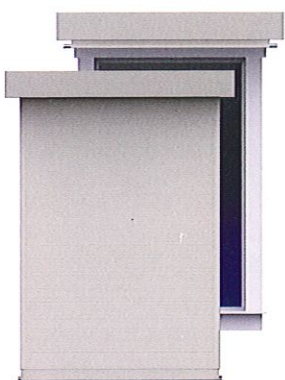


✓ Schools and Universities

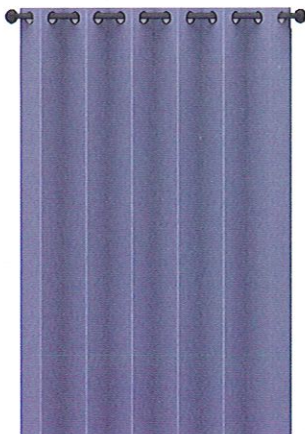
✓ Government and Municipal

✓ Places of Worship

✓ Commercial Businesses



Roll-Up Window Shades



Window and Hallway Curtains



Roll-Up Doorway Covers



Fixed Panel Door Shields



Hallway Segregation & Blast Barriers



# Elegant Protection Solutions for a Safer World



## A Wealth of Options to Meet Your Cosmetic Needs

1. Cover fabrics and sheet metal fascia available in a standard pallet of colors



2. Options for fabric wrapped fascia to match the curtain cover material

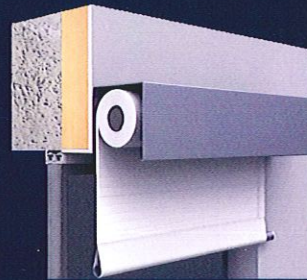
3. Printable patterns for cover materials



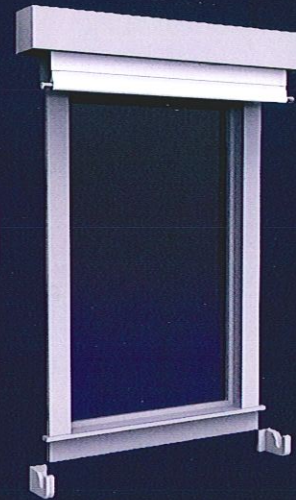
4. Fabric and colors fully customizable upon request

## Roll-Up Shades and Covers

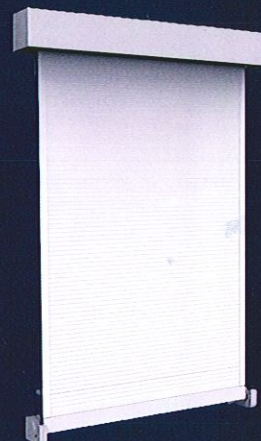
- Doors, hallway barriers, and larger windows, deploy like a conventional window shade
- For smaller windows and doors:
  - 1) The hem bar locks into mounts that sit below the window
  - 2) Or the shade is guided by cables mounted along the frame
- The motor controls will function with a standard wall switch, wireless remote control, or by connecting to an existing alarm system



Roll-Ups mount above the window or door

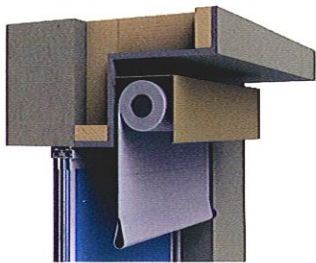


Raised

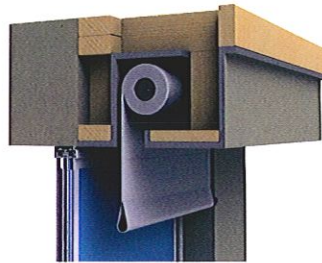


Locked into mounts

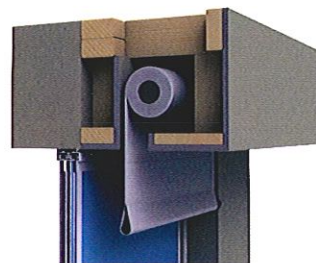
## Mounting Options



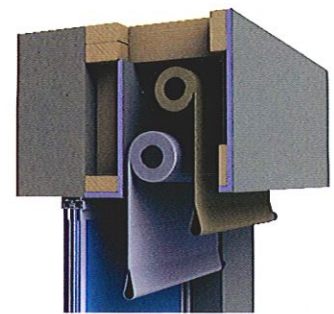
Above the door/window frame



In the ceiling



In a soffit



With a second cosmetic cover